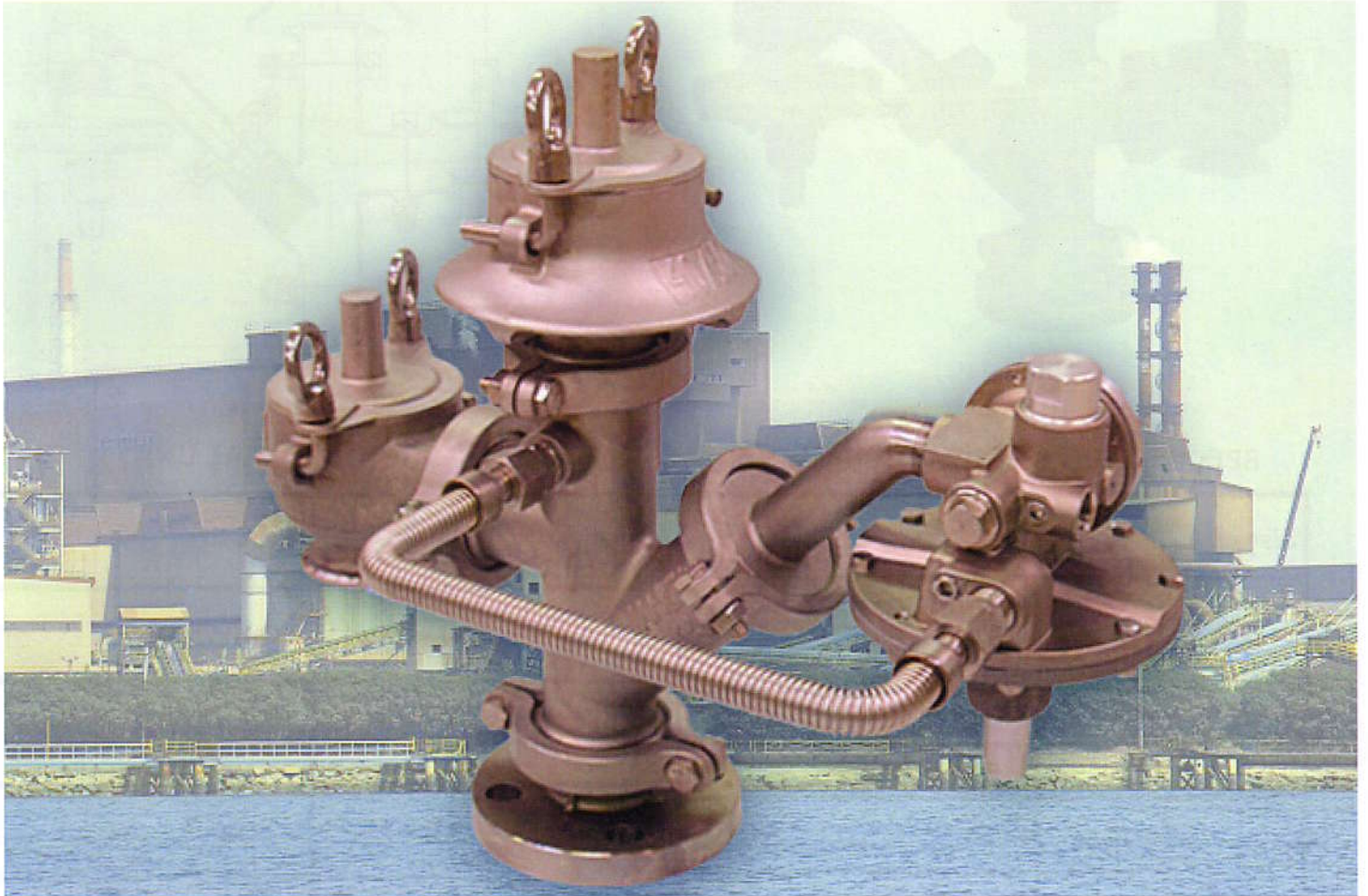
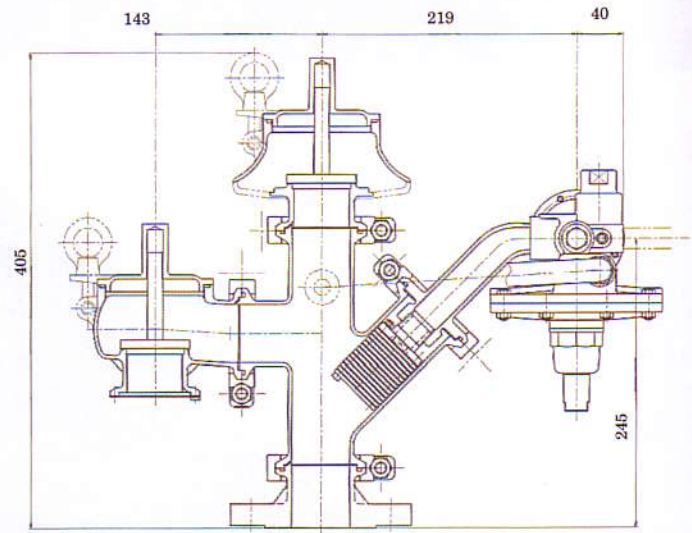
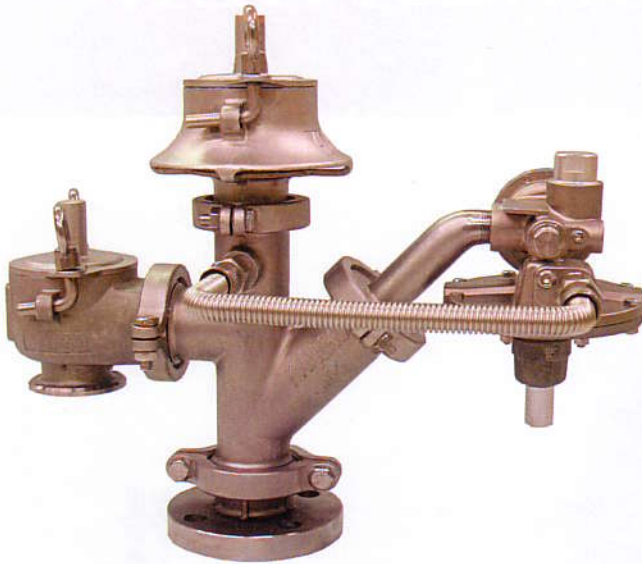


KEEPER BREATHER



- Can be installed using only the tank nozzle of the breather valve.
- The pipe laying work for secondary and control pipings of the gas seal unit is unnecessary, so piping costs can be reduced.
- When installing to an existing tank, it is unnecessary to provide additional connections for secondary and control pipings.
- A greater piping space is available because secondary and control pipings need not be used.
- Designed to be easy to disassemble and inspect using a sanitary joint.
- Better in flow performance than conventional products.

KEEPER BREATHER



SPECIFICATION (BREATHER VALVE)

Size	40A 50A	
Flange	JIS10K JPI150 ANSI150	
Exhaust starting pressure	+0.2~+3.0kPa	
Intake starting pressure	-0.25~-3.0kPa	
Material	Body	SCS13A
	Element	SUS304
	Rubber	Viton PTFE

SPECIFICATION (GAS SEAL UNIT)

Primary	Rc3/8	
Primary pressure	0.1~0.7MPa* ¹	
Set pressure	0.1~3kPa* ²	
Material	Body	SCS13
	Element	SUS304
	Rubber	Viton Kalrez , PTFE

Note 1: Normal control is not effected when the primary pressure becomes less than 0.1MPa during operation (while fluid is flowing).

Note 2:

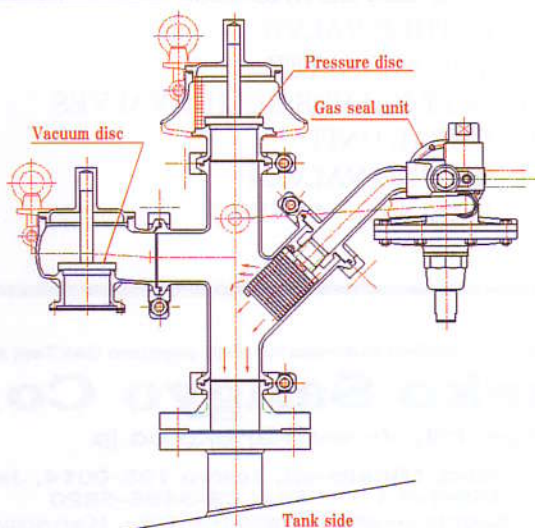
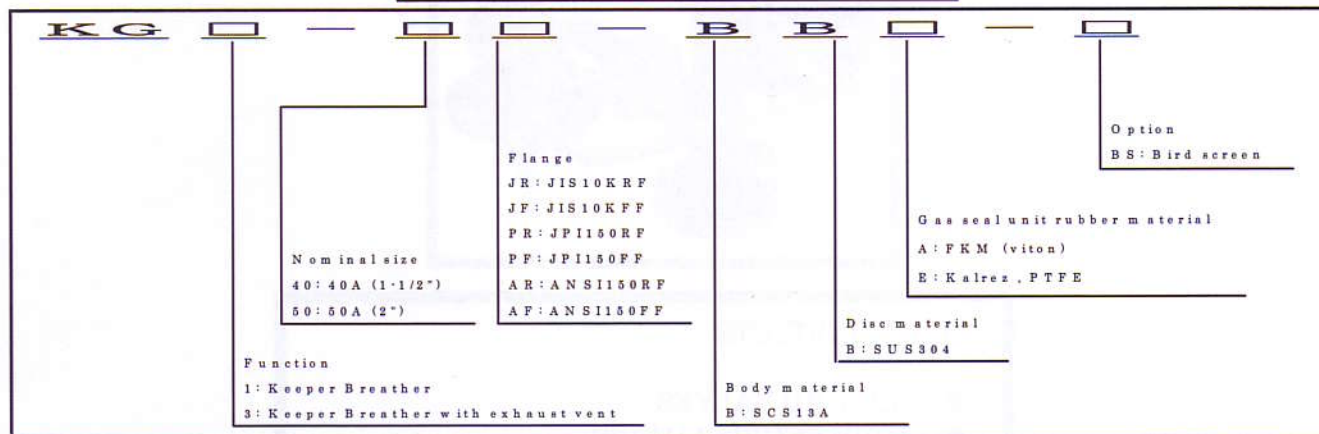
一次圧力が0.4~0.7MPaに変動しても、設定圧力は変化しませんが、一次圧力が0.4MPa未満で変動した場合、設定圧力が変化します。

The main valve is pilot-operated. In a full sealed tank, therefore, its inner pressure stabilizes at a level about 0.05 to 0.1kPa higher than the set pressure.

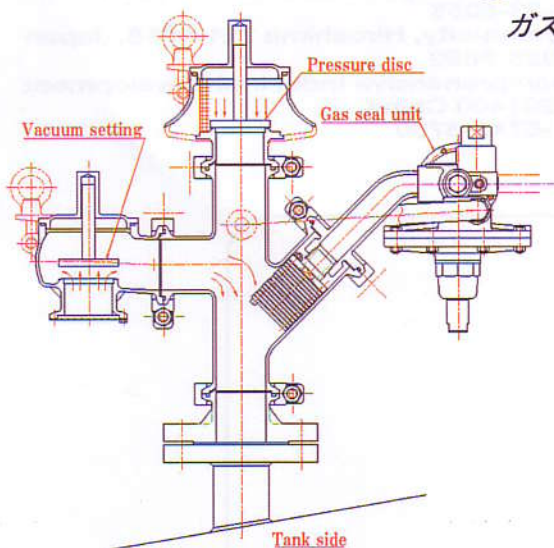
KEEPER BREATHER

The keeper breather is an integrated combination of a gas seal unit that internally seals the tank at micro pressure with inert gas (N₂ gas) and a breather valve for tank ventilation. New products that newly create added values in the micro-pressure control market are available at Kaneko Sangyo, a company of engineering

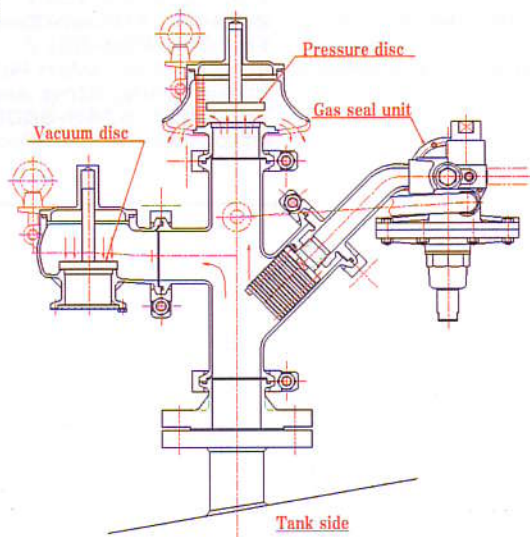
EXPLANATION OF DESIGNATIONS



ガスシール作動時



Intake operation



Exhaust operation



MAIN PRODUCTS

- SOLENOID VALVES
- LIQUID LEVEL GAUGES
- BREATHER VALVE
- FLAME ARRESTER
- SAFETY VALVES, RELIEF VALVES
- GAS SEAL UNIT
- REDUCING VALVES
- HYDRAULIC VALVES



ISO9001 Approved, Certified Business for High-pressure Gas Test and Manufacture

Kaneko Sangyo Co., Ltd.

Home page: <http://www.kaneko.co.jp>

Head Office:

5-10-6, Shiba, Minato-ku, Tokyo 108-0014, Japan
Tel: 03-3455-1414 Fax: 03-3456-5820

Hiratsuka Factory:

5-3-9, Higashiyawata, Hiratsuka City, Kanagawa 254-0016, Japan
Tel: 0463-23-1511 Fax: 0463-23-8055

Fukuyama Office:

2-24-25, MinamiZaoh-cho, Fukuyama-city, Hiroshima 721-0973, Japan
Tel: 084-923-5877 Fax: 084-923-5892

Shanghai Kaneko:

No.318 Xiao Wan RD. Shanghai Comprehensive Industrial Development
Zone. Zong Xing Area Shanghai 201400 China.
Tel: 8621-5743-3600 Fax: 8621-5743-3700
[Http:// www.kaneko.com.cn](http://www.kaneko.com.cn)

