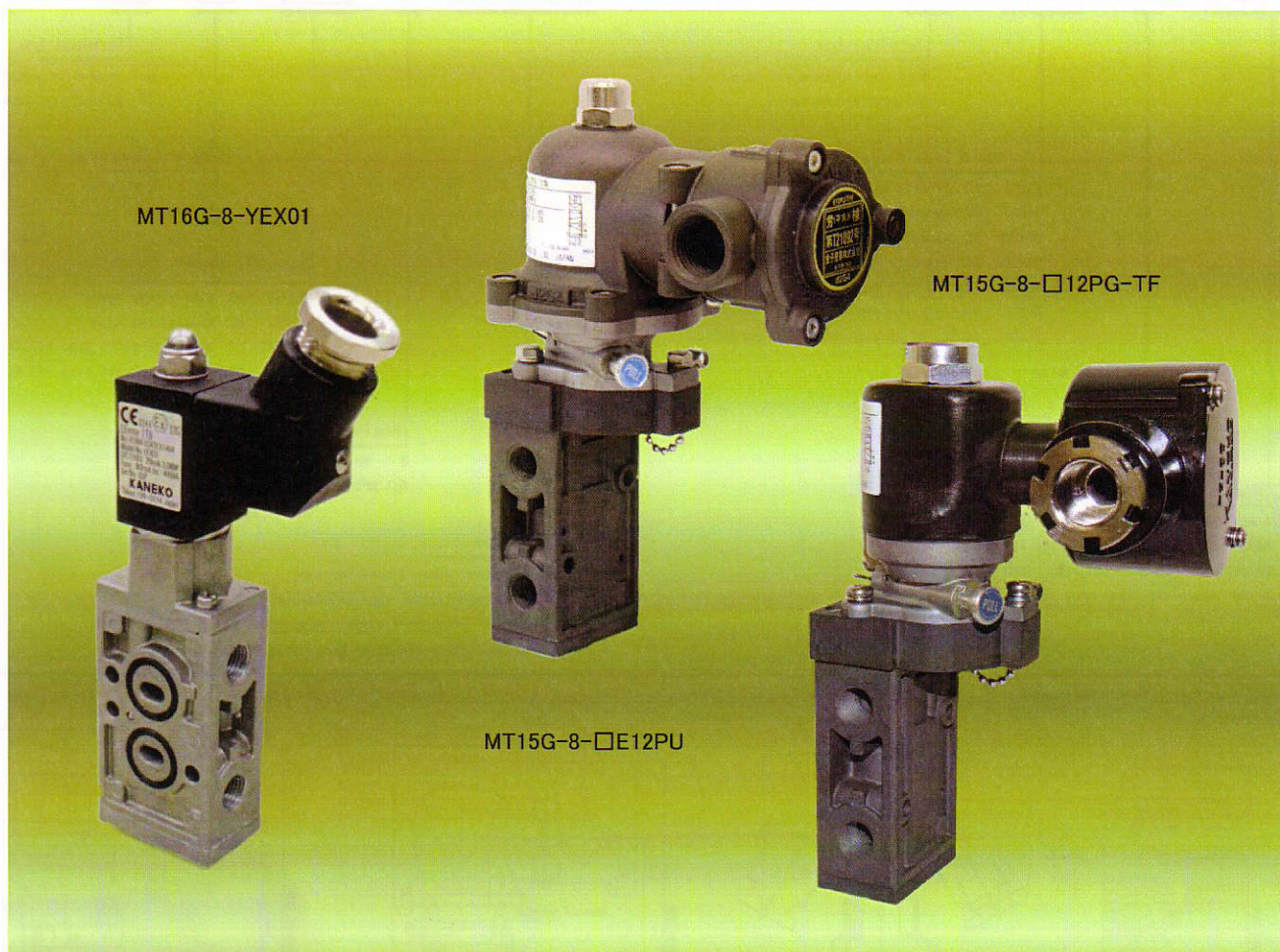


NAMUR Mount Four-way Solenoid Valve, Thin Body Type



Features

This valve needs no troublesome piping work as it can be directly installed to the cylinder by the NAMUR mounting method.

Because of the standardized configuration for connection, the valve is available for use with any cylinder that is designed according to the NAMUR standard.

- Large in flow volume in spite of the thin body and compact size.

Being designed to allow a uniform rate of flow through the two outlets and exhaust port, the valve enables well-balanced cylinder operation and ensures a Cv value of 0.9.

- Stainless steel-body type is also available.

In addition to the standard aluminum body type, a stainless steel body type is available for protection from salt damage to the facilities in coastal areas, etc.

- Main valve of spool type able to operate without lubrication.

A combination of the spool with a packing of special shape enables valve operation without lubrication. However, it is permissible to do lubrication for use with the cylinder.

- All models equipped with a button for manual operation.

Silent Technology KANEKO



Explanation of Model Numbers (Designations)

MT15G - 8 - [] - []

Terminal box
 Null: explosion-proof type
 TF: general-use type

Solenoid type
 A12PG: AC, general-use type
 D12PG: DC, general-use type
 AE12PU: AC, explosion-proof type (d2G4)
 DE12PU: DC, explosion-proof type (d2G4)
 AE22P: AC, hydrogen explosion-proof type (d3aG4)
 DE22P: DC, hydrogen explosion-proof type (d3aG4)
 YEX01: AC/DC, CE marking-compliant and ATEX-certified

Nominal size
 8 : Rc 1/4
 8N: NPT 1/4

Model
 4-way 2-position type
 NAMUR mount pilot type solenoid valve
 MT15G: aluminum die-cast body, thin type
 MT16G: stainless steel body, thin type

MT15DG - 8 - [] - []

Terminal box
 Nil: explosion-proof type
 TF: general-use type

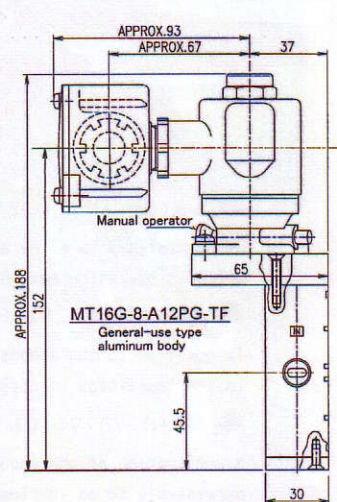
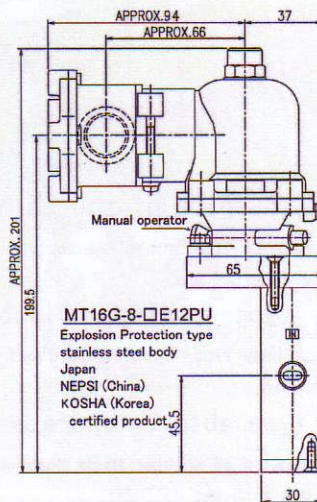
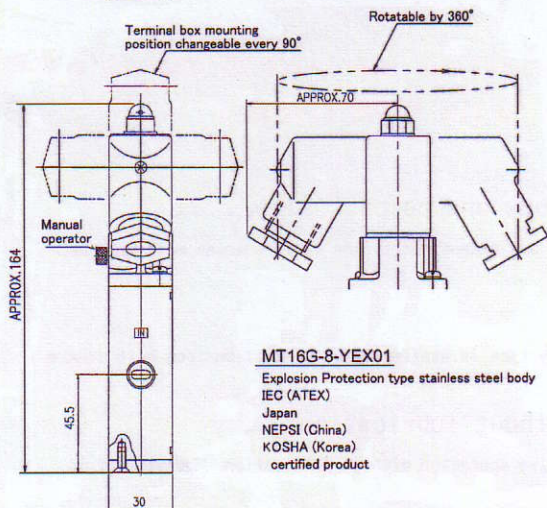
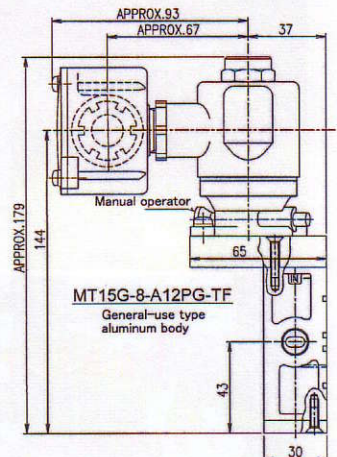
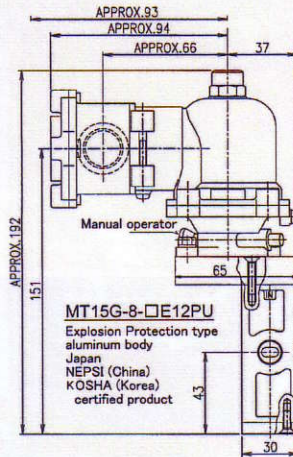
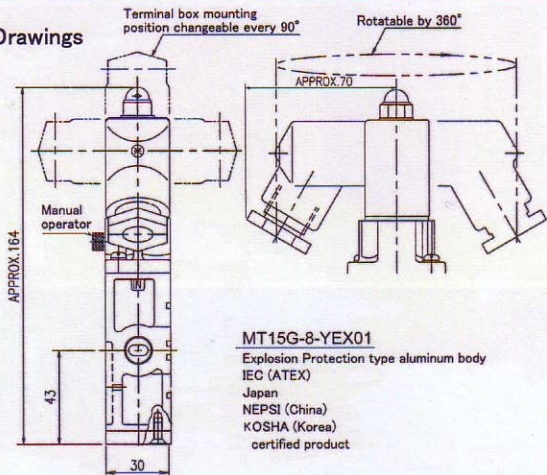
Manual operator
 Null: not attached
 M: attached

Solenoid type
 A12PRS: AC, general-use type
 D12PRS: DC, general-use type
 AE12PRS: AC, explosion-proof type (d2G4)
 DE12PRS: DC, explosion-proof type (d2G4)

Nominal size
 8 : Rc 1/4
 8N: NPT 1/4

Model
 Dual coil 4-way 2-position type
 NAMUR mount pilot type solenoid valve
 MT15DG: aluminum die-cast body, thin type
 MT16DG: stainless steel body, thin type

Layout Drawings



ISO9001 Approved, Certified Business for High-pressure Gas Test and Manufacture

Kaneko Sangyo Co., Ltd.

Home page: <http://www.kaneko.co.jp>

Head Office: 5-10-6, Shiba, Minato-ku, Tokyo 108-0014, Japan
 Tel: 03-3455-1414 Fax: 03-3456-5820

Hiratsuka Factory: 5-3-9, Higashiyawata, Hiratsuka City, Kanagawa 254-0016, Japan
 Tel: 0463-23-1511 Fax: 0463-23-8055

Fukuyama Office: 2-24-25, MinamiZaoh-cho, Fukuyama-city, Hiroshima 721-0973, Japan
 Tel: 084-923-5877 Fax: 084-923-5892

Shanghai Kaneko: No.318 Xiao Wan RD. Shanghai Comprehensive Industrial Development
 Zone. Zong Xing Area Shanghai 201400 China.
 Tel: 8621-5743-3600 Fax: 8621-5743-3700
[Http:// www.kaneko.com.cn](http://www.kaneko.com.cn)